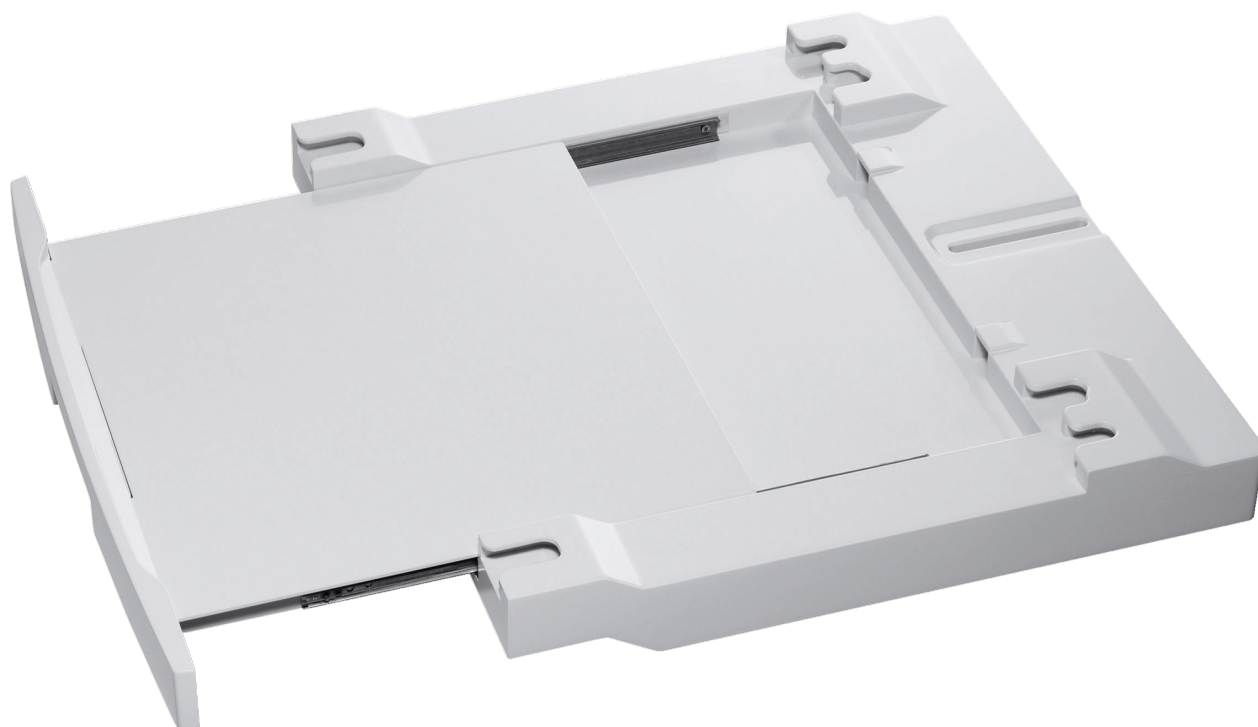


**Laundry Stacking Kit, White**



## Product Details

### FEATURES

---

Convenient slide-out bench

Easy-to-grip moulded handled

Adjustable rear fastening  
bracket

Matching white facade

---

Space maximising design

---

### BENEFITS

---

Convenient slide-out bench

The convenient slide-out bench allows you to easily load and unload clothes in and out of your dryer without the need for constant bending.

Easy-to-grip moulded handle

The moulded integrated handle ensures an easy and stable means of sliding out the bench.

---

Adjustable rear fastening bracket

Fit the stacker perfectly to your washer and dryer for a stable and secure washing experience.

Matching white facade

The stacker is the same colour as your washer and dryer, creating a stylish and seamless flow between the two machines.

---

Space maximising design

This stacker was designed specifically for your washer and dryer and allows you to maximise the valuable real estate within your laundry.

---

## Specifications

### PRODUCT PROFILE

---

Product Relates to	Washing Machine,Dryer
--------------------	-----------------------

---

Install, Perform, Care	Install
------------------------	---------

---

### DIMENSIONS

---

Total height (mm)	65
-------------------	----

---

Total width (mm)	605
------------------	-----

---

Total depth (mm)	610
------------------	-----

---

### FEATURES

---

Accessory Other Features	Quick & easy installation,Model specific - check for compatibility,May require assistance moving appliances when installing,Slide-out shelf
--------------------------	---

---

### SHIPPING

---

Shipping Weight (Kg)	5.6
----------------------	-----

---

Pack Dimensions Height (mm)	95
-----------------------------	----

---

Pack Dimension Width (mm)	645
---------------------------	-----

---

Pack Dimension Depth (mm)	665
---------------------------	-----

---

## Terms and Conditions

### IMPORTANT

This is a guide of product dimensions only. For complete installation instructions, refer to the manual provided with product.

### PRODUCT INFORMATION

The descriptors and illustrations in this publication apply to the specific products and models described as at the date of issue. Under our policy of continuous product development, product specifications may change without notice. Prospective purchasers should therefore check with their retailer to ensure this publication correctly describes the products that are being offered for sale. All information supplied is to be used for general reference purposes only and is on the understanding that Electrolux Home Products Pty Ltd (Australia) and Electrolux (NZ) Ltd (New Zealand) will not be liable for any loss, liability or damage of whatever kind arising as a result of reliance on such information. Colours of products illustrated are as close as printing limitations allow. Electrolux will at all times comply with its obligations pursuant to law including Trade Practices (Australian Consumer Law) Act and Regulations.

### WARRANTY

This warranty only applies to Appliances purchased and used in Australia or New Zealand and used in normal domestic applications and is in addition to (and does not exclude, restrict, or modify in any way) any non-excludable statutory warranties in Australia or New Zealand. All warranties are subject to the conditions set out in the warranty card accompanying the product when purchased.

#### ELECTROLUX HOME PRODUCTS AUSTRALIA

telephone: 1300 363 640

fax: 1800 350 067

email: [customercare@electrolux.com.au](mailto:customercare@electrolux.com.au)

web: [www.electrolux.com.au](http://www.electrolux.com.au)

#### ELECTROLUX HOME PRODUCTS NEW ZEALAND

telephone: 09 573 2230

fax: 09 573 2221

email: [customercare@electrolux.co.nz](mailto:customercare@electrolux.co.nz)

web: [www.electrolux.co.nz](http://www.electrolux.co.nz)