

Thinking of you

 **Electrolux**



Dear Customer,

Please read these operating instructions carefully and pay particular attention to the safety notes indicated in the first pages.

We recommend that you keep this instruction booklet for future reference and pass it on to any future owners.

Transport damages

After unpacking the machine please check it is not damaged. If in doubt, do not use the machine but contact your local Service Centre.

The symbols you will see on some paragraphs of this booklet have the following meaning:



The warning triangle and/or the other key words (Warning!, Caution!) emphasize information that is particularly important for your safety or correct functioning of the appliance.



The information marked with this symbol provides additional instructions and practical tips on the use of the appliance.



Tips and information about economical and ecological use of the machine are marked with this symbol.

Contents

Important safety information	4	Use	9
Disposal	5	The Control Panel	9
Tips for environmental protection	5	Drying Guide	10
Description of the appliance	6	Operating Sequence	10
Installation instructions	7	Useful Hints	12
Positioning	7	Maintenance and cleaning	13
Exhaust Grille	7	Troubleshooting guide	14
Electrical Connection	7	Accessories	14
Venting Kit	8	Warranty	15
Stacking Kit	8		

Technical specifications

DIMENSIONS:	Height	80cm
	Width	60cm
	Depth	60cm

ELECTRICAL CONNECTION		230-240v/50Hz
POWER ABSORBED:		2250 W
MIN. FUSE RATING		10 A

MAX. DRYING CAPACITY:	Cotton, linen	6kg
-----------------------	---------------	-----

CONSUMPTION:	Cotton, linen	5.1 kWh (6kg store dry)
--------------	---------------	-------------------------

Important safety information

These warnings have been provided in the interest of safety. You MUST read them carefully before installing or using the appliance.

Installation

- Any electrical work required to install this appliance should be carried out by a qualified electrician or competent person.
- Care must be taken to ensure that the appliance does not stand on the electrical supply cable.
- This tumble dryer is designed to be vented through to open air. It should have its own ventilation system which should not be joined with any other ventilation system connected to any other appliance.

Use

- This appliance is designed for domestic use only. If the machine is used for any other purposes or is not used correctly, the manufacturer accepts no responsibility for any damage that might occur.
- The tumble dryer is intended only for drying textiles washed in water.
- Always unplug the appliance after use.
- Clothes which are dripping wet should not be placed in the dryer.

Fire hazards

Some fabrics are not suitable for tumble drying. The following **MUST NOT be placed in your dryer due to the risk of a fire or an explosion:**

- Items that have been spotted or soaked with **vegetable oil, cooking oil, suntan oil, linseed oil, salad oil, lubrication oil or grease.**
Oil affected items can ignite spontaneously, especially when exposed to heat sources such as in a tumble dryer. The items become warm, causing an oxidation reaction in the oil. Oxidation creates heat. If heat cannot escape, the items can become hot enough to ignite. Piling, stacking, or storing oil-affected items can prevent heat from escaping and create a fire hazard.
If it is unavoidable that fabrics that contain vegetable or cooking oil, or have been contaminated by hair care products be placed in a tumble dryer, they should first be washed in hot water with extra detergent - this will reduce, but not eliminate, the hazard. The 'cool down' cycle of tumble dryers should be used to reduce the temperature of the items. They should not be removed from the tumble dryer or piled while hot.
- Items that have previously been cleaned in, washed in, or spotted with **petrol/gasoline, industrial chemicals used only for cleaning, dry-cleaning solvents or other flammable or**

explosive substances. Highly flammable substances commonly found around the house include acetone, (nail polish remover) denatured alcohol, petrol/gasoline, kerosene, some spot removers, turpentine, waxes and wax removers. Items containing foam rubber (also known as latex foam) or similarly textured rubber-like materials. Foam rubber materials can produce fire by spontaneous combustion when heated.

- Fabric softeners or similar products should not be used in a tumble dryer to eliminate the effects of static electricity unless this practise is specifically recommended by the manufacturer of the fabric softener or product.
- Undergarments that contain metal reinforcements should not be placed in a tumble dryer. Damage to tumble dryer can occur if metal reinforcements come loose during drying.
- Plastic articles such as shower caps or babies' waterproof napkin covers should not be placed in a tumble dryer.
- Rubber-backed articles, clothes fitted with foam rubber pads, pillows, rubber boots and rubber-coated sports shoes, should not be placed in a tumble dryer.
- **Danger of explosion:** Never tumble dry items that have been in contact with inflammable solvents (petrol, methylated spirits, dry cleaning fluid and the like). As these substances are volatile, they could cause an explosion. Tumble dry only items washed with water.
- Ensure no gas lighters have accidentally been left in pockets of garments to be loaded in the dryer.
- Remove lint from the filter after using the tumble dryer. To prevent fire risks, **do not use the appliance if lint filter is damaged or missing.**
- Do not allow lint to accumulate around the dryer.

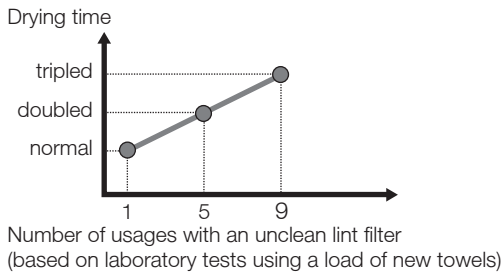
For your safety, and to reduce the risk of fire or an explosion,

DO NOT store or use petrol or other inflammable vapours and liquids near your dryer.

Lint build-up is a fire hazard

A clean lint filter reduces drying times, saves energy and avoids overheating. Overheating may also damage your clothes.

What happens if I forget to clean the lint filter?



You must clean this lint filter after every load

- Never operate your dryer without the lint filter
- Do not allow lint to build up around your dryer.
- A torn or damaged lint filter must be replaced immediately.
- Overloading can increase lint build-up because the airflow is reduced.

General Safety

- It is dangerous to alter the specifications or attempt to modify this product in any way.
- Under no circumstances should you attempt to repair the machine yourself. Repairs carried out by inexperienced persons may cause injury or serious malfunctioning. Contact your local Electrolux Customer Service on 13 13 49. Always insist on genuine Electrolux spare parts.

Child Safety

- The appliance is not intended for use by young children or infirm persons without supervision.
- Young children should be supervised to ensure that they do not play with the appliance.
- The packaging components (e.g. plastic film, polystyrene) can be dangerous to children - danger of suffocation! Keep them out of children's reach.
- Make sure that children or pets do not climb into the drum.
- When the appliance is to be scrapped, cut off the electrical supply cable and destroy the plug with the remaining cable.



To avoid potential fire hazards, we recommend that you pay a qualified service technician to periodically clean your dryer.



Disposal

Packaging Materials

Most of the packaging materials are recyclable. Please dispose of those materials through your local recycling depot or by placing them in appropriate collection containers.

Machine

Use authorised disposal sites for your old appliance. Help keep your country tidy!



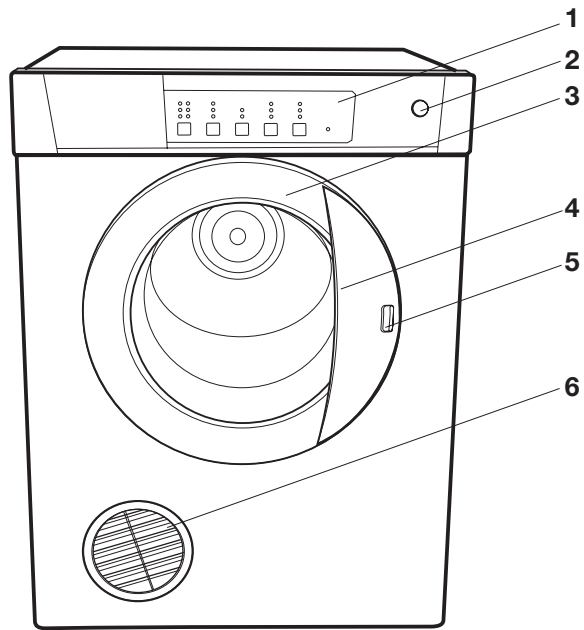
Tips for environmental protection

To save energy and to help protect the environment, we recommend these hints:

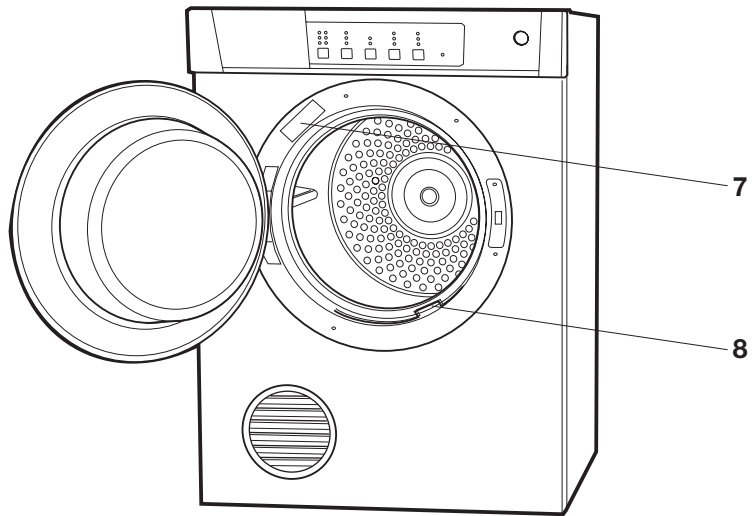
- Try to load the machine half to two thirds full as small loads are uneconomical.
- Always load well spun laundry. The higher the spin speed, the shorter the drying time and therefore the lower the electricity consumption.
- Do not over-dry laundry, this avoids creasing and saves energy.
- Select the drying program according to the type of laundry and the required degree of dryness.
- Clean the lint filter regularly to avoid excessive drying times and high electricity consumption.
- Ventilate the room well. The room temperature should not exceed +35°C during drying.

Description of the appliance

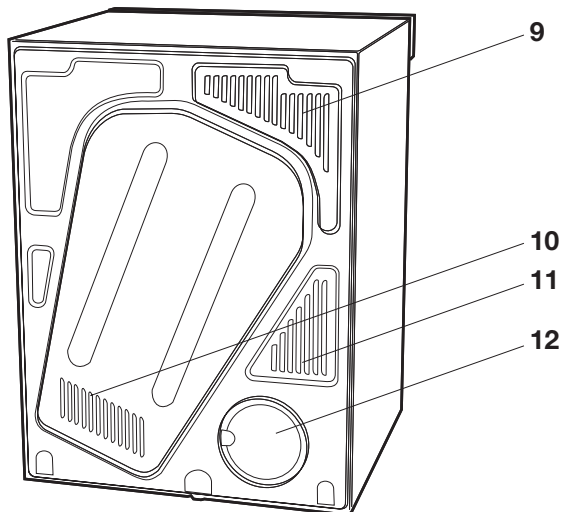
- 1** Control Panel
(For a detailed description of the control panel please refer to page 9)
- 2** On/Off button
- 3** Dryer door
- 4** Dryer door handle
- 5** Door safety button
- 6** Exhaust grille
(For further information regarding the exhaust grille please refer to page 7)



- 7** Serial No. Model No.
Rating Plate
- 8** Lint Filter



- 9** Air inlet grille
- 10** Air inlet grille
- 11** Air inlet grille
- 12** Alternative rear exhaust grille
(For further information regarding the exhaust grille please refer to page 8)



Installation

Positioning

It is recommended that, for your convenience, the machine is positioned close to your washing machine. Whilst drying, the tumble dryer will expel a certain amount of warm, very moist air, and this should be ducted from the room as quickly as possible to prevent condensation. In an extremely well ventilated room or if the dryer is close to an open window, this may occur naturally.

However, in general, it is better to carry the dryer's exhaust outside via a 100mm diameter flexible hose available as an optional venting kit; ending either temporarily at an open window, or permanently at a fixed ventilation grille, fitted to an exterior wall, window or roof space.

You can choose to put your dryer:-

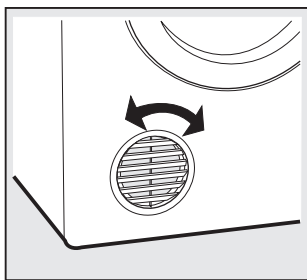
- on the floor.
- on a work bench.
- on top of a front load washing machine (using a stacking kit available as an optional extra).

The appliance must not be installed behind a lockable door, a sliding door or a door with a hinge on the opposite side to that of the tumble dryer in such a way that a full opening of the tumble dryer door is restricted.

Do not position the dryer near a curtain which could be drawn against the air inlet grille as this would cause a much longer clothes drying time.

The exhaust grille

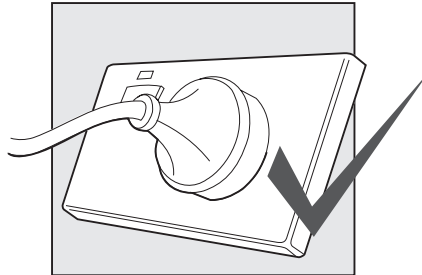
The exhaust grille has a range of positions, which allows you to select the optimum exhaust air angle. Simply hold the grille and rotate it until it hits the built-in stop.



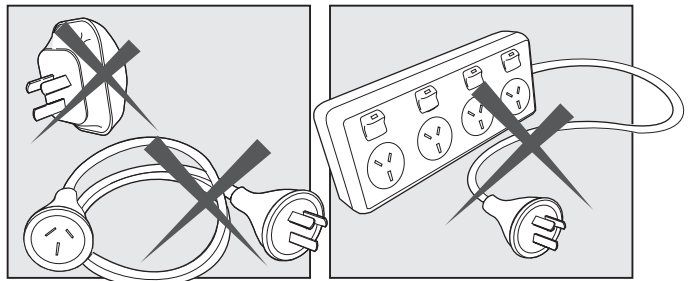
Electrical Connection

Failure to follow these safety instructions could damage the dryer or your clothes. **You may then not be covered by warranty for this damage.**

Only plug this appliance directly into an AC power supply, which is properly earthed and has the correct voltage. See the serial number sticker located on the top of the door opening for voltage information.



CAUTION: If this appliance is supplied from a cord extension set or electrical portable outlet device, the cord extension set or electrical portable outlet device must be positioned so that it is not subject to splashing or ingress of moisture. For safety reasons we strongly advise against the use of double adaptors, extension cords or power boards.



IMPORTANT: If the electrical cord of this appliance is damaged, it must be replaced by the Manufacturer, Authorised Service Agent or similarly qualified person in order to avoid a hazard.

Do not install your dryer in a cupboard or small un-vented laundry unless you are using a venting kit.

There are 2 VENTING OPTIONS

- front
- rear - using a venting kit (optional extra)

Venting Kit

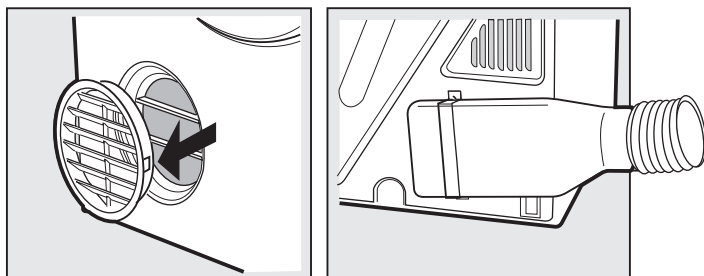
DVK005 - Through the wall

DVK006 - Universal flexible hose

Important: Use only kits approved by Electrolux Home Products Pty Ltd with your dryer. Contact the Electrolux Home Products Pty. Ltd. Spare Parts Centre for the list of approved kits. The exhaust duct must not exceed 2 metres in length at 100mm diameter.

If connecting the dryer to a common ducting system, safety advice should be requested from the manufacturer.

If you choose to use an optional vent kit, the exhaust grille at the front of the dryer will need to be replaced with the outlet cover from the back of the dryer. Gently prise open the grille, using a thin bladed tool. Next, remove the cover from the back and clip it into the grille space at the front. The exhaust grille is not required when using a vent kit.

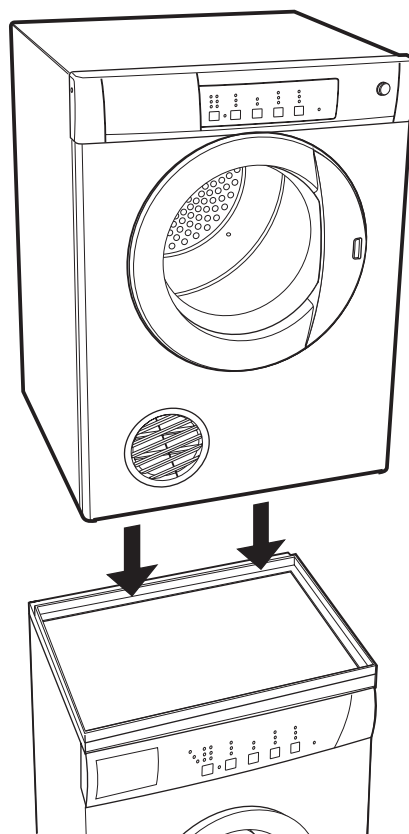


Inlet and outlet points need clear airflow to prevent overheating, so ensure there is adequate ventilation. (i.e. open window or external door.)

If a venting kit is used and the exhaust is discharged out of the room, there must be adequate ventilation to avoid the back flow of gases into the room from appliances burning other fuels, including open fires, when operating the tumble dryer. This is not applicable where a venting hose is directed to an open window. The exhaust air must not be discharged into a flue which is used for exhausting fumes from appliances burning gas or other fuels.

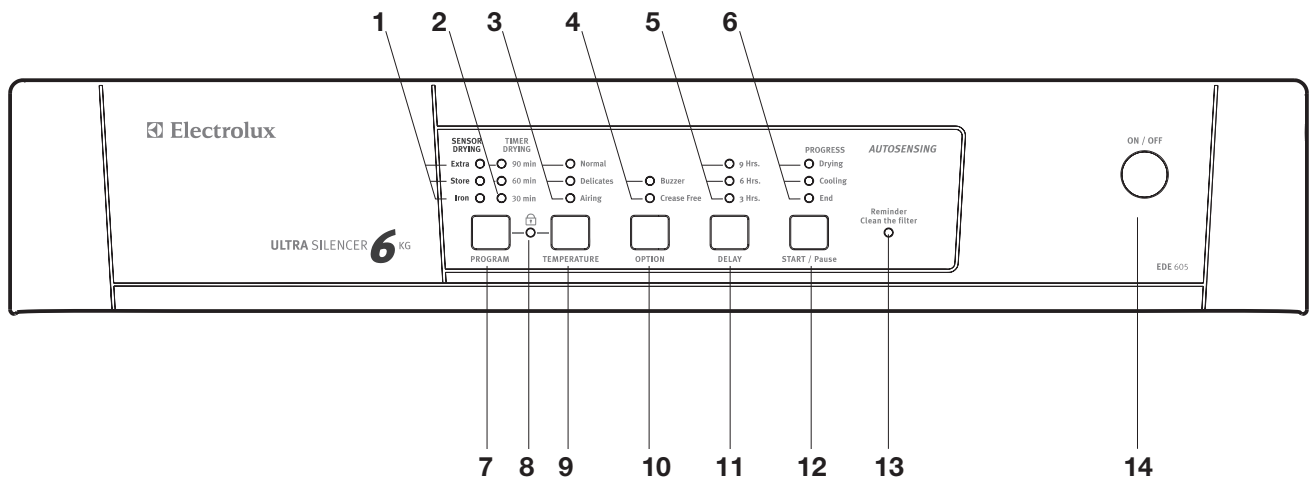
Stacking Kit

You can use a stacking kit if you want to mount your dryer on top of a Electrolux front load washing machine. Use kit part number DKSK03. Refer to the kit instructions on how to install.



Use

The control panel



1. Sensor drying indicator lights

These indicators show which cycle the dryer is on. Extra, Store or Iron drying cycle.

2. Timer drying indicator lights

These indicator lights show which drying time has been selected.

3. Temperature indicator lights

These indicators show you which temperature has been selected.

4. Option indicator lights

These lights indicate if you have chosen the buzzer to be on or off at the end of the cycle and/or the crease free setting has been chosen.

5. Delay start indicator lights

These lights show if you have chosen a nine hour delay start, a six hour delay start or a three hour delay start before your dryer begins drying.

6. Progress indicator lights

These indicators show at which part of the cycle your machine is, the Drying or Cooling cycle or the End.

7. Program button

This allows you to select drying times according to the type of laundry and degree of drying required.

8. Child lock

This indicator light shows that the child lock has been set.

9. Temperature button

Pressing this button allows you to select the correct temperature according to the type of laundry to be dried.

10. Options

- A buzzer will sound at the end of the cycle. Press this button when selecting the program if you wish to switch the buzzer off.
- Crease Free option may also be selected.

11. Delay Start button

This button allows you to delay the start and finish of the cycle, allowing you to remove the clothes immediately upon completion. This will reduce creasing.

12. Start/Pause button

This button allows you to start or pause the dryer to check the contents of the load or perhaps add more clothes to the load.

13. Reminder light

This indicator light reminds you to clean the lint filter.

14. ON/OFF button

This button switches the dryer on. At the end of the program, press the button again to switch the dryer off.

Drying guide

Your load, when dry must not exceed the rated capacity of 6kg.

(See page 12 for a table of average weights of laundry items)

Always check your labels for the drying symbols which the International Care Labelling Code now uses.



May be tumble dried



Do Not Tumble Dry



Normal drying (high temperature)



Delicate drying (low temperature)

- **Permanent press and synthetics** - take out as soon as the dryer stops to reduce wrinkles.
- **Woollen articles** - not recommended. Pull them to their original shape, then dry them flat.
- **Woven and loop knit materials** - may shrink by varying amounts, depending on their quality. Do not use the 'normal' setting for these fabrics. Always stretch them out immediately after drying.
- **Fibre or leather materials** - always check the manufacturer's instructions.
- **Baby clothes and night gowns** - acrylic clothing or sleepwear use only on the 'delicates' setting.

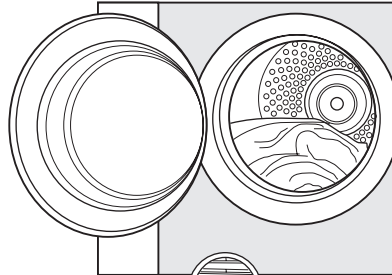
Note: We strongly advise against the use of fabric conditioners of the sheet type that are added to the clothes in the drum. These products may lead to rapid blockage of the lint filter and inefficient operation of your dryer.



Operating sequence

1.

Load your dryer loosely until it is no more than **TWO THIRDS FULL**. Clothes must tumble freely in a dryer. Don't cram them in. Wet clothes fluff up when dry.



Overloading will:

- Reduce efficiency
- Increase drying time
- Increase the risk of creasing

Do not load clothes or other articles which are dripping wet into your dryer.

2.

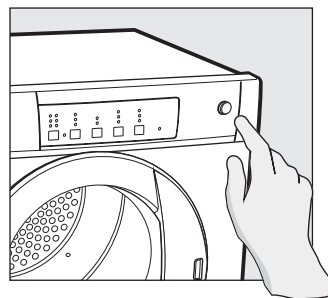
Door safety switch

The dryer will not operate unless the button on the door is fully pressed in.



3.

Press then release the on/off button on the sensor control panel. (See below) You are now ready to select your drying Program.



You can use your dryer 2 ways:

1. Sensor drying mode
2. Timer drying mode

1. Sensor Drying mode

1. Press the **PROGRAM** pad to select either **Extra, Store or Iron** from the **Sensor PROGRAM**. Do not select the Extra option for delicates such as polyester as shrinking may occur.
2. Press the **TEMPERATURE** pad to select either **Normal or Delicates** from the **TEMPERATURE** program. **Airing** is not available in Sensor mode. The indicator light indicates your selection.

Now press the **START/Pause** pad to start the dryer.

2. Using Timer drying mode

1. Press the **PROGRAM** pad to select either **90, 60 or 30** Minutes from the **Timer PROGRAM**. The indicator light indicates your selection.
2. Press the **TEMPERATURE** pad to select either **Normal, Delicates or Airing**. The indicator light indicates your selection.

Now press the **START/Pause** pad to start the dryer.

Options

The end of cycle **Buzzer**, and **Crease Free** can be selected using the **OPTION** pad. Pressing will de-select the **Buzzer** and select **Crease Free**, another press will select both options, and another press will de-select both options.

The **Crease Free** feature is designed to help prevent creases forming in the clothes after the normal drying cycle has finished. The drum will rotate for 5 seconds every minute and will go for 3 hours. This is useful if you are unable to empty the dryer straight away.

Delay Start

To delay the starting of the dryer, press **DELAY** to select the required start delay time, then press the **Start/Pause** pad. Make sure you have set the desired program before setting the delay.

Child Lock

With the two modes you can use **Child Lock**. While the dryer is running press the **PROGRAM** and **TEMPERATURE** pads at the same time for at least 2 seconds. The buzzer will sound and the **Child Lock** light will come on. To remove the **Child Lock** follow the same procedure. When the **Child Lock** is selected all pads (except On/Off button) will not operate. If you open and close the door during operation the **Child Lock** will have to be reset.

- 4. Switch Off**
When you have finished using the dryer, press the **On/Off** button, to turn off the power, then switch off at the power point. It is not recommended that the power be left on to the dryer.

- 5. Clean Lint Filter**
After every load clean the lint filter to reduce drying times and avoid overheating.

Checking the load

To check the dryness or add clothes during the cycle, simply open the door. The dryer will beep several times indicating the door is open. If further drying is required, close the door and push in the door safety switch button, then press the **START/Pause** pad to continue.

For the best drying performance, only add or remove clothes near the beginning of the drying cycle.

Cooling

Your dryer will automatically switch off the heater at the end of every drying cycle. The cooling light will come on. This is important as it removes stored heat from the clothes and helps prevent creasing.

At the end of cooling the buzzer will sound to indicate your clothes are dry (unless you have de-selected this function). It will sound again after fifteen minutes. The Clean the filter Reminder light will remain on.

The progress indicator lights let you know what the dryer is doing, either drying, cooling or finished.

Last Memory Setting

Next time you turn your dryer on it will be ready to go as it remembers the last **PROGRAM, TEMPERATURE** and **OPTION** setting used. You can change the settings if you wish.

i Useful hints

- Never tumble dry the following: Delicate items such as net curtains, woollen, silk, fabric with metal trim, nylon tights, bulky materials such as anoraks, blankets, eiderdown, sleeping bags, feather quilts and any item containing foam rubber or materials similar to foam rubber.
- Check and empty pockets. Clips, pens, nails and pins can damage both the dryer and your clothes. Other items such as matches or cigarette lighters will cause a fire.
- Close all press studs, hooks, eyes and zips that may catch on something else. Tie all belts and apron strings to prevent tangling.
- Drying time will depend on fabric type and construction, load size and wetness. Save time and money and always spin the load as dry as possible in your washing machine.
- The time will also be affected by voltage fluctuations, room temperature and humidity. Clothes will dry more slowly on a cool or humid day.
- Easy-care items eg shirts, should be briefly pre-spun before drying (depending on the crease resistance approximately 30 seconds)
- To avoid static charge when drying is completed, use a fabric softener when you are washing the laundry.
- Remove the laundry as soon as possible after the dryer has finished.
- Clothes or towels containing sand or grit should be washed first.
- For best results, sort the load according to fabric types. Such as heavy items which may take longer to dry, eg towels, flannelette sheets etc, than ones which dry quickly, eg poly/cotton shirts and sheets.
- Avoid drying dark clothes with light coloured items such as towels as lint will show on the dark clothes.

Note: Some fabrics will collect lint from other clothes and items. Separate the lint 'givers' and the lint 'collectors' to minimise this problem.

Clothes that give lint include towels, nappies, chenille. Clothes that collect lint include corduroy, synthetics and permanent press garments.

- If individual items are still damp after drying, set a 30 minute post drying time. This may be necessary particularly for multilayered items (eg collars, pockets, etc).
- Always clean the lint filter after each load, this will reduce drying time and save you money.

To help you, here is a list of the average weights of some common laundry items.

Sheet	700 - 1000g
Tablecloth	400 - 500g
Kitchen towel	70 - 120g
Table napkin	50 - 100g
Towelling hand towel	150 - 250g
Bathrobe	1000 - 1500g
Men's shirt	200 - 300g
Pillowcase	100 - 200g
Men's pyjamas	400 - 500g
Ladies nightdress	200 - 250g
Bath Towel	300 - 400g

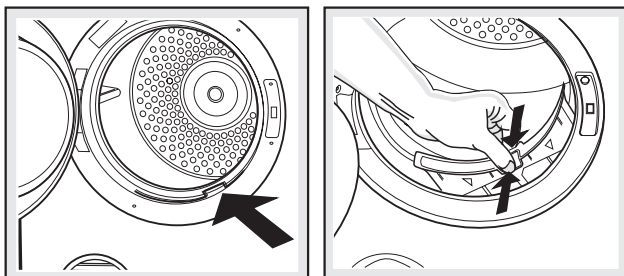
Reversing Action

The drum is designed to rotate in each direction, clockwise and anti-clockwise. This reduces tangling and gives more even drying in a shorter time.

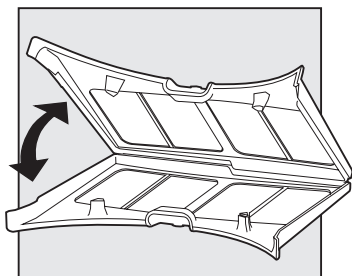
Maintenance & cleaning

Cleaning the lint filter

The lint filter is located at the front of your dryer at the bottom of the door opening.



To remove the lint filter open the door and press the two pads together. Pull the lint filter out of the pocket.



Open apart the lint filter and wipe or peel off the lint.

Ensure the lint filter 'clicks' when replacing. It can be inserted into the pocket either way.

Troubleshooting

Troubleshooting

Check the points listed here **before** you call for help, and **make sure that you have followed the Dryer safety information on pages 4 & 5.**

Problem	Possible cause
The dryer will not start:	<ul style="list-style-type: none"> ● Plug is not firmly in socket, or power not turned on. ● You have blown a fuse. Check that power point with another appliance. ● You have not closed the dryer door or pushed in the door safety switch button.
Your clothes are still wet:	<ul style="list-style-type: none"> ● The selected drying time was insufficient. Select a longer time setting. ● Longer time may be needed when the room temperature is 10° C or less. ● Check that the lint filter is not blocked. ● Check to see that you have read all the instructions carefully. ● Not enough ventilation in the room. ● Air inlet grille or exhaust blocked or restricted.
The lights flash and the buzzer sounds every 30 seconds.	<ul style="list-style-type: none"> ● Indicates a fault with the dryer. It will continue as best it can. Contact the Service Centre.

Important

To operate efficiently the clothes dryer must have an unrestricted air supply and exhaust ventilation.

Contact the Service Centre if you are still having problems. Write down the model and serial number and the date of purchase before you ring. The Service Centre will need this information.

Service calls resulting from installation where ventilation is restricted are not covered by warranty.

THE COST OF THIS TYPE OF CALL WILL BE CHARGED TO THE CUSTOMER.

Should you require further instructions in the use and care of your clothes dryer please contact the CUSTOMER CARE CENTRE on the phone numbers listed:

Australia.....**1300 363 640 8am to 5pm EST & 8pm EDST**
Monday to Friday

New Zealand...**(09) 573 2384 8am to 5pm**
Monday to Friday

If you have a warranty or spare parts enquiry you should call the number listed on page 15.

Accessories

You can buy both the venting kits and the stacking kit (as mentioned on page 8) from your local appliance shop or Electrolux Home Products Pty. Ltd. Spare Parts Distributor.

Electrolux Warranty

FOR SALES IN AUSTRALIA AND NEW ZEALAND
APPLIANCE: ELECTROLUX DRYER

This document sets out the terms and conditions of product warranties for Electrolux branded appliances. It is an important document. Please keep it with your proof of purchase documents in a safe place for future reference should you require service for your Electrolux appliance.

General Terms and Conditions

1. In this warranty
 - (a) 'Electrolux' means Electrolux Home Products Pty Ltd ABN 51 004 762 341 in respect of Appliances purchased in Australia and Electrolux (NZ) Limited in respect of Appliances purchased in New Zealand;
 - (b) 'Appliance' means any Electrolux product purchased by you accompanied by this document;
 - (c) 'Warranty Period' means
 - (i) where you use the Appliance for personal, domestic or household purposes in Australia the period of 24 months and in New Zealand the period of 24 months;
 - (ii) where you use the Appliance for commercial purposes, in Australia the period of 3 months and in New Zealand the period of '3' months, (if the period stated is 0 months you are not covered by this product warranty) following the date of original purchase of the Appliance;
 - (d) 'you' means the purchaser of the Appliance not having purchased the appliance for re-sale, and 'your' has a corresponding meaning.
2. This warranty only applies to Appliances purchased and used in Australia or New Zealand and is in addition to (and does not exclude, restrict, or modify in any way) any non-excludable statutory warranties in Australia or New Zealand.
3. Electrolux warrants that, when dispatched from an Electrolux warehouse, the Appliance is free from defects in materials and workmanship for the Warranty Period.
4. During the Warranty Period Electrolux or its Authorised Service Centre will, at no extra charge if your appliance is readily accessible without special equipment, and subject to these terms and conditions, repair or replace any parts which it considers to be defective. You agree that any replaced Appliances or parts become the property of Electrolux. This warranty does not apply to light globes, batteries, filters or similar perishable parts.
5. Parts and Appliances not supplied by Electrolux are not covered by this warranty.
6. Where you are within an Electrolux service area, this warranty covers the cost of transport of the Appliance to and from Authorised Service Centres of Electrolux and travelling costs for representatives of the Authorised Service Centre to and from your home or business. If you are outside an Electrolux service area, you will bear these costs. For information about whether you are within an Electrolux service area, please phone 13 13 49 in Australia, or 0800 10 66 10 in New Zealand.
7. Proof of purchase is required before you can make a claim under this warranty.

8. You may not make a claim under this warranty unless the defect claimed is due to faulty or defective parts or workmanship. Electrolux is not liable in the following situations (which are not exhaustive):
 - (a) The Appliance is damaged by:
 - (i) accident
 - (ii) misuse or abuse, including failure to properly maintain or service
 - (iii) normal wear and tear
 - (iv) power surges, electrical storm damage or incorrect power supply
 - (v) incomplete or improper installation
 - (vi) incorrect, improper or inappropriate operation
 - (vii) insect or vermin infestation.
 - (b) The Appliance is modified without authority from Electrolux in writing.
 - (c) The Appliance's serial number or warranty seal has been removed or defaced.
 - (d) The Appliance was serviced or repaired by anyone other than Electrolux or its Authorised Service Centres.
9. This warranty, the contract to which it relates and the relationship between you and Electrolux are governed by the law applicable in the Australian State where the Appliance was purchased or the law applicable in New Zealand if the Appliance was purchased in New Zealand. Where the Appliance was purchased in New Zealand for business purposes the Consumer Guarantee Act does not apply.

Limitation of Liability

10. To the extent permitted by law:
 - (a) Electrolux excludes all warranties other than as contained in this document;
 - (b) Electrolux shall not be liable for any loss or damage whether direct or indirect or consequential arising from your purchase, use or non-use of the Appliance.
11. Provisions of the Trade Practices Act and State consumer legislation in Australia, and the Consumer Guarantees Act, the Sale of Goods Act and the Fair Trading Act in New Zealand, imply warranties or conditions, or impose obligations, upon Electrolux which cannot be excluded, restricted or modified. To the extent permitted by law, the liability of Electrolux (if any) arising out of or in relation to the Appliance or any services supplied by Electrolux shall be limited (where it is fair and reasonable to do so):
 - (a) in the case of Appliances, at its option, to the replacement or repair of the Appliances or the supply of equivalent products or the payment of the cost of replacing the Appliances or having the Appliances repaired or of acquiring equivalent Appliances. Upon being replaced, parts and Appliances become the property of Electrolux; or
 - (b) in the case of services, at its option, to the supply of the services again or the payment of the cost of having the services re-supplied;
 and in the case of Appliances or services supplied in New Zealand, loss or damage whether direct or indirect or consequential that is reasonably foreseeable.

Privacy

You acknowledge that in the event that you make a warranty claim it will be necessary for Electrolux and its Authorised Service Centres to exchange information in relation to you to enable Electrolux to meet its obligations under this warranty.

Important Notice

Before calling a Service Technician please check carefully the operating instructions, service booklet and the warranty terms and conditions.

<p>FOR SERVICE OR TO FIND THE ADDRESS OF YOUR NEAREST STATE SERVICE CENTRE IN AUSTRALIA Please call 13 13 49 <small>For the cost of a local call (Australia only)</small></p>	<p>SERVICE AUSTRALIA</p> <p> Electrolux</p> <p>ELECTROLUX HOME PRODUCTS</p>	<p>FOR SPARE PARTS OR TO FIND THE ADDRESS OF YOUR NEAREST STATE SPARE PARTS CENTRE IN AUSTRALIA Please call 13 13 50 <small>For the cost of a local call (Australia only)</small></p>
<p>FOR SERVICE OR TO FIND THE ADDRESS OF YOUR NEAREST AUTHORISED SERVICE CENTRE IN NEW ZEALAND Free call 0800 10 66 10 <small>(New Zealand only)</small></p>	<p>NEW ZEALAND SPARE PARTS CENTRES</p> <p>AUCKLAND Prime Distributors Ltd. 8 Highbrook Drive, East Tamaki.....(09) 273 3580 CHRISTCHURCH Prime Distributors Ltd. Unit 1, 127 Montreal Street.....(03) 377 1009 R. Redpath Ltd. 55 Ferry Road.....(03) 379 0446 DUNEDIN Appliance Parts Company, 590 Hillside Road.....(03) 455 5443</p> <p> Electrolux ELECTROLUX HOME PRODUCTS</p>	