

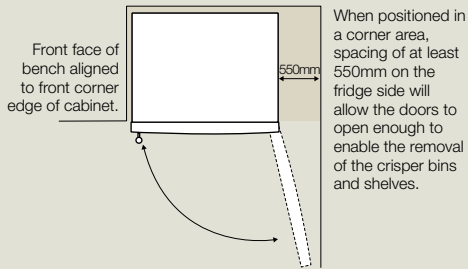
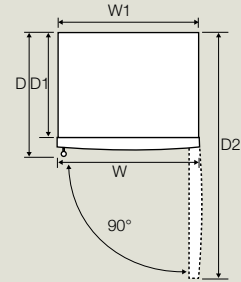
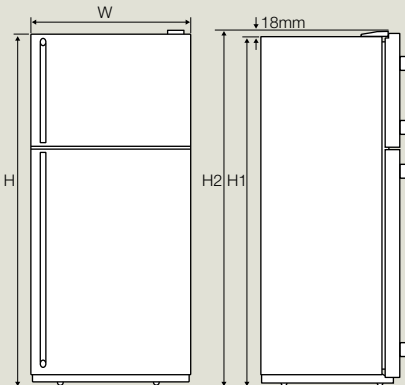
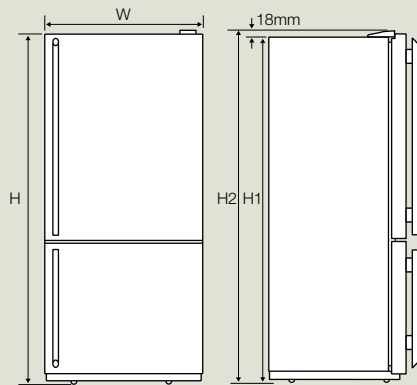
dimensions and installation guide

electrolux refrigeration

models EBE5100SE, EBM5100SC, EBE4300SE, EBM4300SC, ETE5200SC, ETM5200SC, ETE4200SC, ETM4200SC

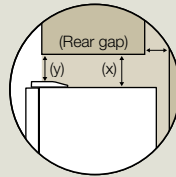
bottom mount fridge
EBE5100SE, EBM5100SC,
EBE4300SE, EBM4300SC

top mount fridge
ETE5200SC, ETM5200SC
ETE4200SC, ETM4200SC

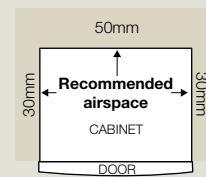


When positioned in a corner area, spacing of at least 550mm on the fridge side will allow the doors to open enough to enable the removal of the crisper bins and shelves.

Recommended Airspaces (all models)



If you do not have a cupboard with a rear gap, the recommended clearance area on top increases from 50mm to 90mm (x) and from 32mm to 72mm (y).



Please note: Doors are designed to sit proud of cabinetry (not flush).

	max door height (H)	cabinet height (H1)	total height (H2)	door width (W)	cabinet width (W1)	total depth (D)	cabinet depth (D1)	depth door open (D2)
bottom mount								
EBE5100SE, EBM5100SC	1714	1702	1720	803	790	745	612	1450
EBE4300SE, EBM4300SC	1714	1702	1720	703	690	745	612	1350
top mount								
ETE5200SC, ETM5200SC	1714	1702	1720	803	790	745	612	1450
ETE4200SC, ETM4200SC	1634	1622	1640	703	690	745	612	1350

IMPORTANT

This is a guide of product dimensions only. For complete installation instructions, refer to the manual provided with product.



Thinking of you
Electrolux