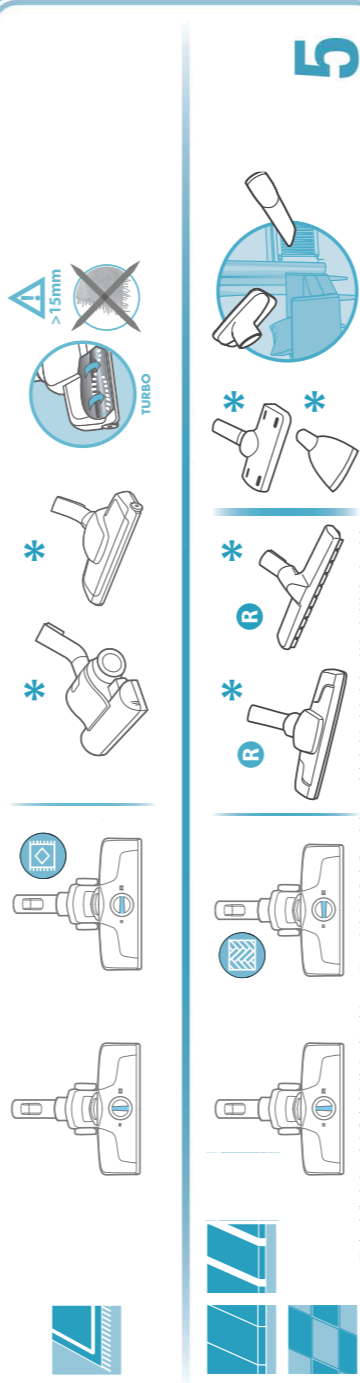
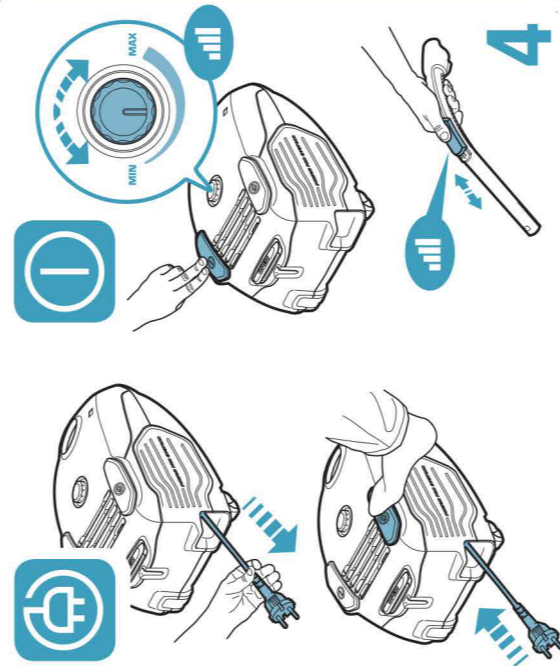
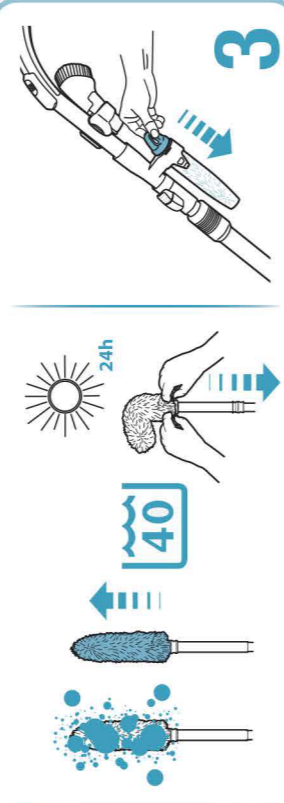
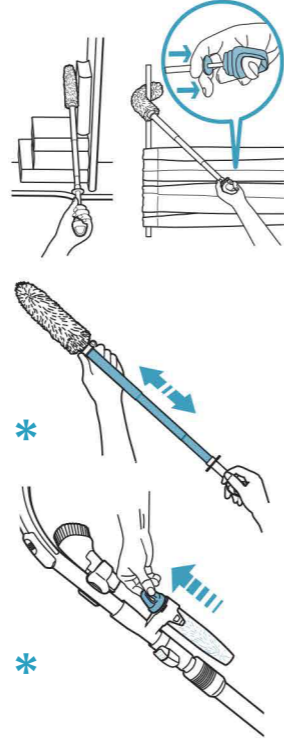
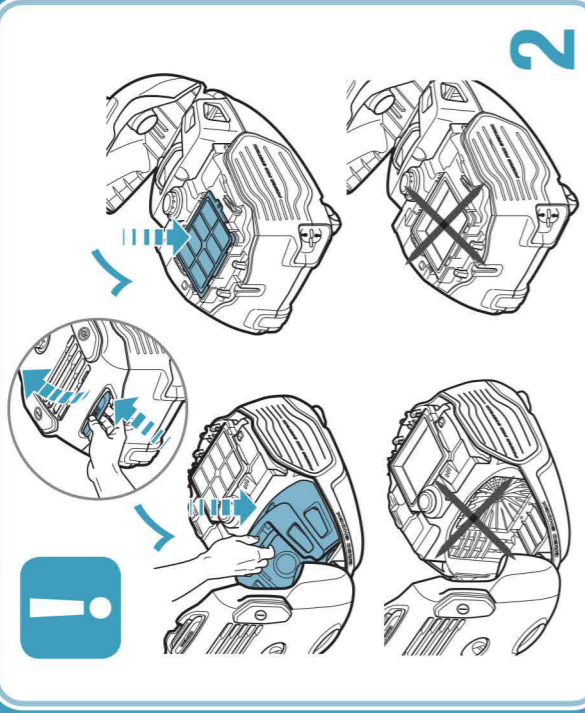
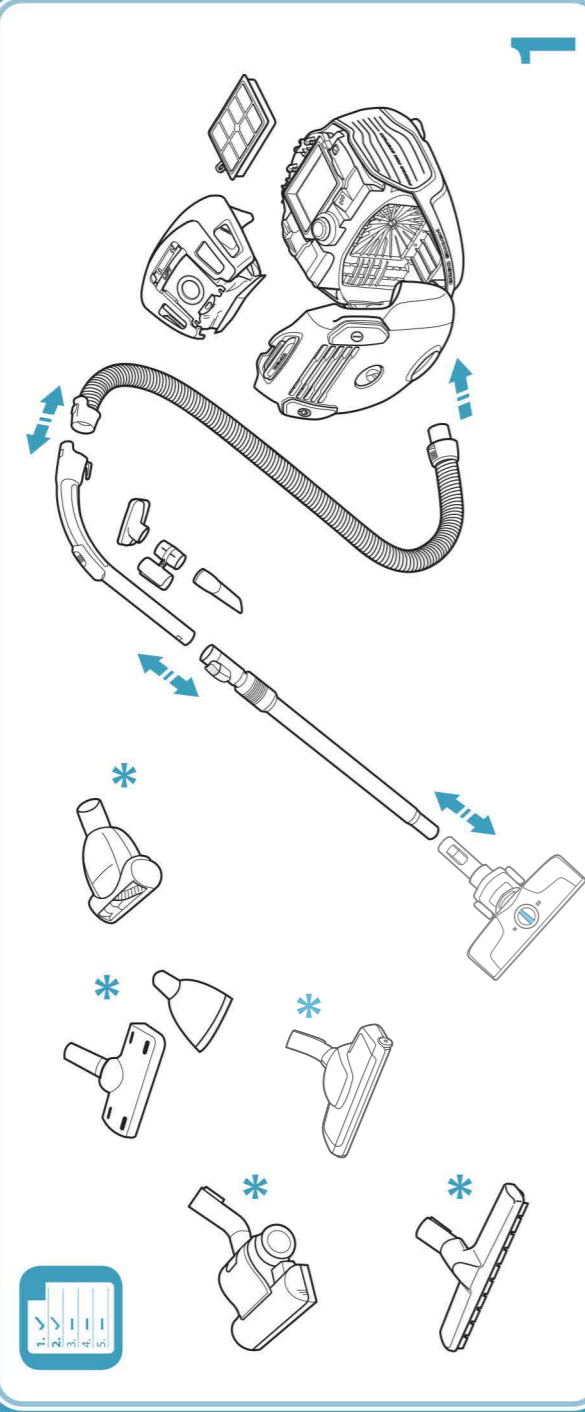




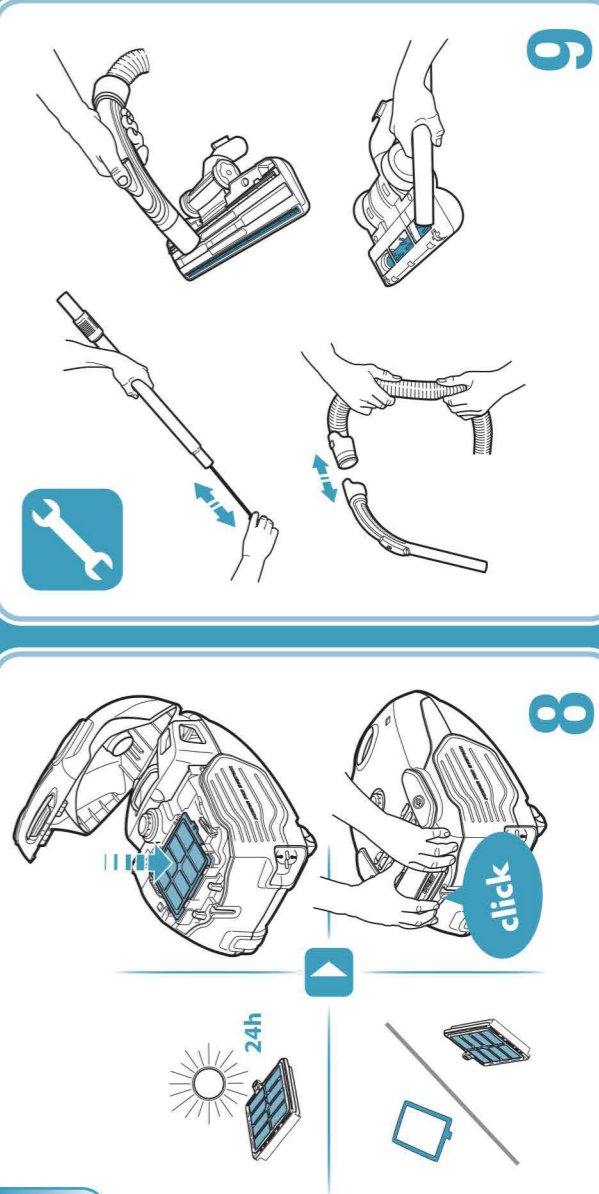
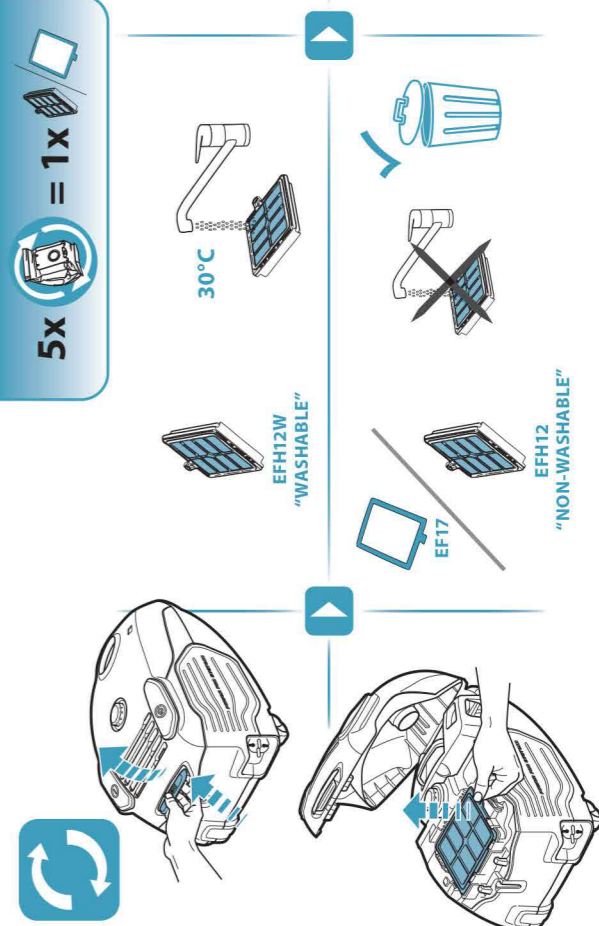
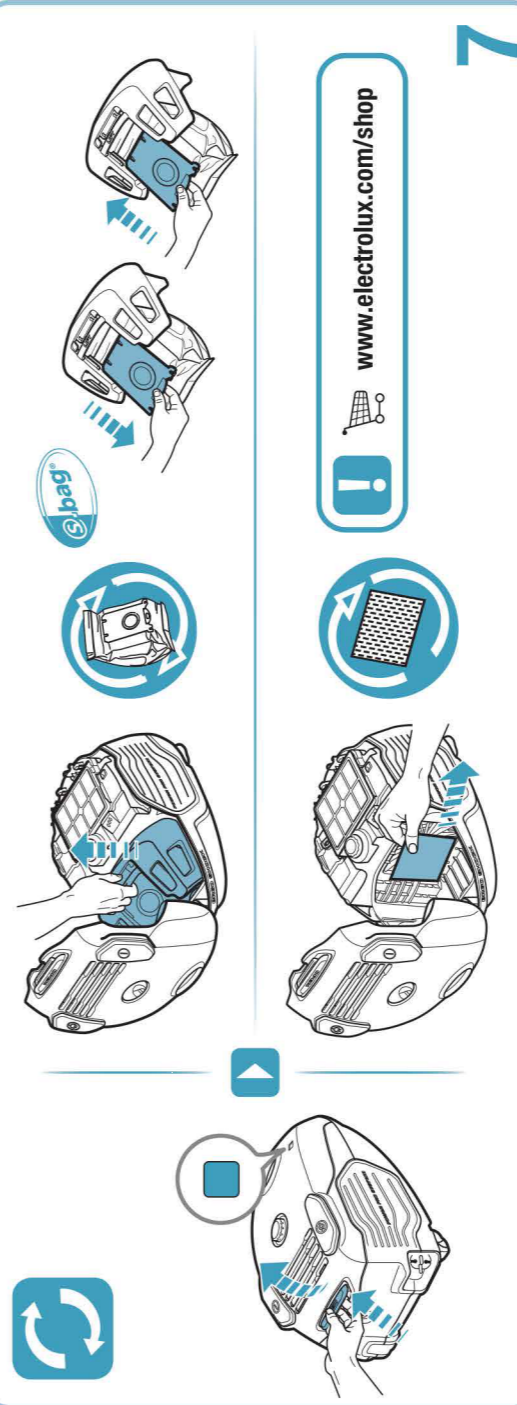
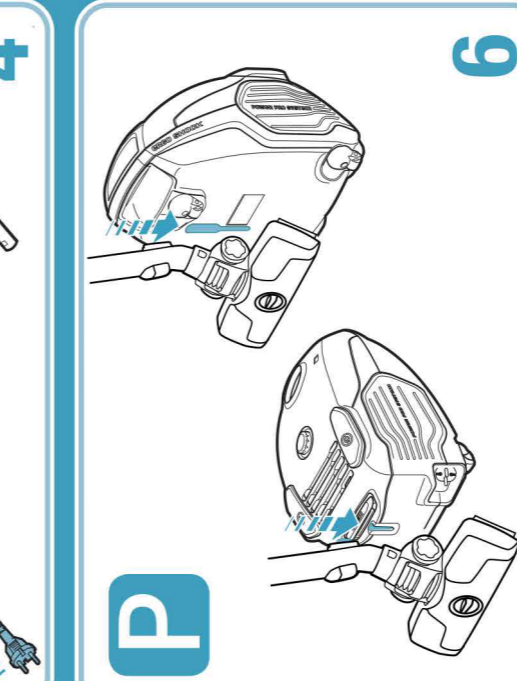
# Electrolux

# POWERFORCE



주의: 카펫 및 마루 바닥에서 사용할 수 있는 다용도 노즐로, 바닥타입에 맞게 브러시(를) 조절하여 사용해야 바닥 균열을 방지할 수 있습니다.

**R** Recommended nozzle | 推薦噴頭 | 推薦噴嘴 | Nosel yang disarankan | Muncung yang disarankan | đầu hút được khuyến nghị | หัวดูดที่แนะนำให้ใช้ | 권장 노즐



\*Applies to certain models only | 僅適用於特定型號 | 仅适用于特定型号 | Berkenaan dengan model yang tertentu sahaja | Chỉ áp dụng cho một số kiểu máy | 只適用於部分型號

www.electrolux.com

A03124701

