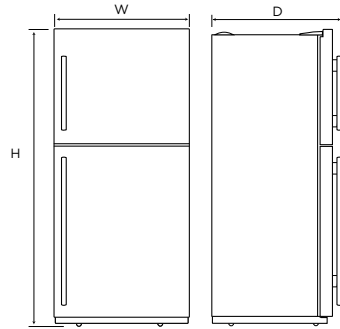
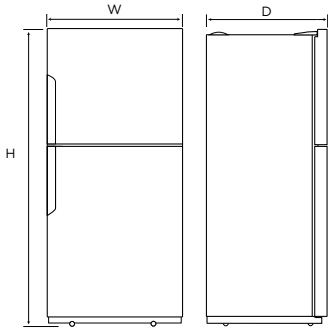


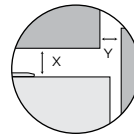
Large Top Mount

WTB5400SC/WC
WTB4600SC/WC

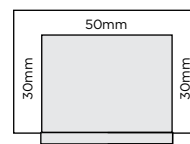
WTB5404SC
WTB4604SC



Minimum Recommended Airspaces



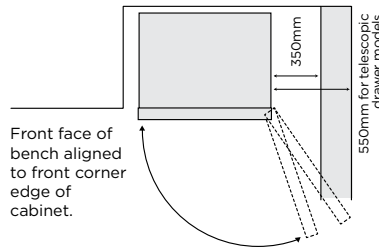
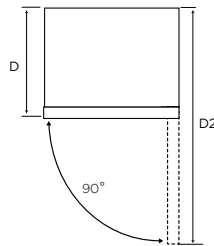
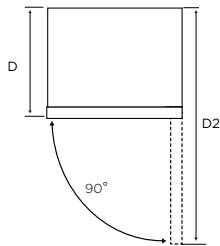
If you have a cupboard above the refrigerator with a rear gap of less than 100mm (Y), recommended minimum clearance at the top of the refrigerator increases from 30mm to 70mm (X).



Please note: Doors are designed to sit proud of cabinetry (not flush).

WTB5400SC/WC
WTB4600SC/WC

WTB5404SC
WTB4604SC



When positioned in a corner area, clearance of at least 350mm on the hinge side will allow the doors to open enough to enable the removal of bins and shelves. This required clearance increases to 550mm for those models with telescopic extension slide-out bins.

Dimensions	Product Height (H)	Product Width (W)	Product Depth (D)	Product Depth (D2) (Door Open)
WTB5400SC/ WC	1725	796	723	1457
WTB5404SC	1725	796	769	1457
WTB4600SC/ WC	1725	699	723	1360
WTB4604SC	1725	699	769	1360

Airspace	Side - both	Top	Behind
WTB5400SC/ WC	30	50	50
WTB5404SC	30	50	50
WTB4600SC/ WC	30	50	50
WTB4604SC	30	50	50

IMPORTANT

These dimensions are a guide only. All measurements are in millimetres (mm). For complete installation instructions, refer to the manual provided with product.
© 2021 Electrolux Home Products Pty Ltd. ABN 51 004 762 341. W_DIM_LTM_Oct21